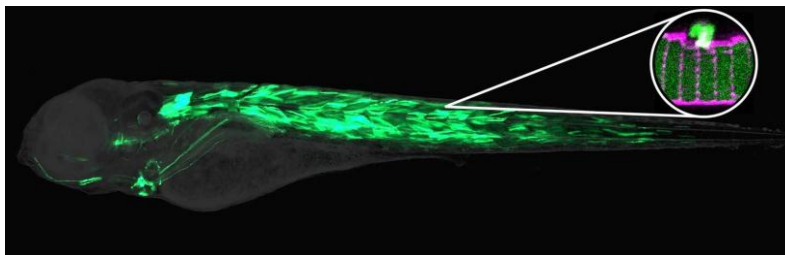


How Muscle Cells Seal Their Membranes

Researchers Hope to Contribute to the Development of Therapies for Human Myopathies



*Repair of the plasma membrane of a cell: For the first time, researchers have observed the relevant repair mechanisms in zebrafish.
(Photo: Institute of Toxicology and Genetics, KIT)*

Every cell is enclosed by a thin double layer of lipids that separates the distinct internal environment of the cell from the extracellular space. Damage to this lipid bilayer, also referred to as plasma membrane, disturbs the cellular functions and may lead to the death of the cell. For example, downhill walking tears many little holes into the plasma membranes of the muscle cells in our legs. To prevent irreparable damage, muscle cells have efficient systems to seal these holes again. Researchers at Karlsruhe Institute of Technology (KIT) and Heidelberg University have succeeded for the first time in observing membrane repair in real-time in a living organism.

The results were published in the recent issue of the journal *Developmental Cell*. Using a novel high-resolution imaging method, Prof. Uwe Strähle and Dr. Urmaz Roostalu for the first time observed membrane repair in real time in a living animal. They tagged repair proteins with fluorescent proteins in muscle of the transparent zebrafish larvae. With a laser, the researchers burned tiny holes into the plasma membrane of muscle cells and followed the repair of the holes under the microscope. They showed that membrane vesicles together with two proteins Dysferlin and Annexin A6 rapidly form a repair patch. Other Annexins accumulate subsequently on the injured membrane. These studies by Karlsruhe and Heidelberg research-

**Monika Landgraf
Press Officer**

Kaiserstraße 12
76131 Karlsruhe, Germany
Phone: +49 721 608-47414
Fax: +49 721 608-43658
Email: presse@kit.edu

chers suggest that the cell assembles a multilayered repair patch from the inside that seals off the cell's interior from the extracellular environment. Moreover, it was found that there is a specialized membrane area that supplies rapidly the membrane that is needed for sealing the plasma membrane hole.

This animal model for membrane repair will contribute to the identification of new proteins in this sealing process and will help elucidate the underlying mechanisms. The results may contribute to the development of therapies for human myopathies and open up new possibilities in biotechnology.

Literature:

Urmas Roostalu, Uwe Strähle: In Vivo Imaging of Molecular Interactions at Damaged Sarcolemma; *Developmental Cell*, 13 March 2012, Volume 22, Issue 3. <http://www.cell.com/developmental-cell/current>

Karlsruhe Institute of Technology (KIT) is a public corporation according to the legislation of the state of Baden-Württemberg. It fulfills the mission of a university and the mission of a national research center of the Helmholtz Association. KIT focuses on a knowledge triangle that links the tasks of research, teaching, and innovation.

This press release is available on the internet at www.kit.edu.

The photo in printing quality may be downloaded under www.kit.edu or requested by mail to presse@kit.edu or phone +49 721 608-47414. The photo may be used in the context given above exclusively.